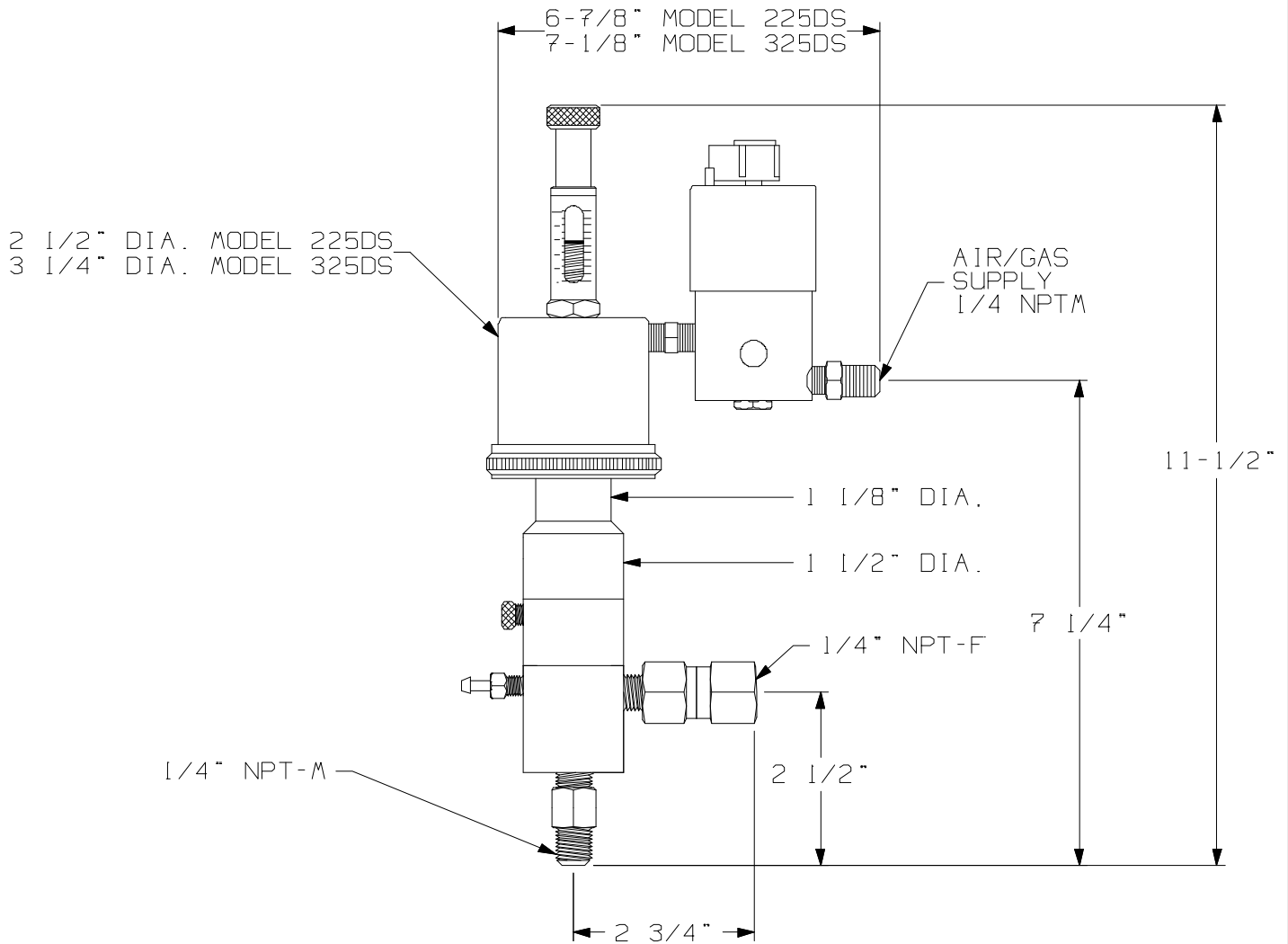


MORGAN PRODUCTS

PNEUMATIC CHEMICAL PUMPS FOR THE GAS AND OIL INDUSTRIES

MODEL 225DS / 235DS-TR2 AND 325DS/335DS-TR2

AIR ACTUATED POSITIVE DISPLACEMENT PUMP



MODEL (WITH TIMER)	DISPLACEMENT	PUMP RATIO	STROKE LENGTH 1in. - cm.	CONNECTIONS ALL NPT INPUT / OUTPUT	MAXIMUM DISCHARGE PSI - BAR	OUTPUT PER HOUR GAL. - LTS
225DS-TR2	.8 cc	69:1	1 - 2.54	1/4-M / 1/4-F	10000 - 689	.06-.63 / .24-2.4
325DS-TR2	.8 cc	122:1	1 - 2.54	1/4-M / 1/4-F	15000 - 1034	.06-.63 / .24-2.4
235DS-TR2	1.8 cc	31:1	1 - 2.54	1/4-M / 1/4-F	4650 - 320	.15-1.5 / .55-5.5
335DS-TR2	1.8 cc	54:1	1 - 2.54	1/4-M / 1/4-F	8100 - 558	.15-1.5 / .55-5.5

MORGAN PRODUCTS INC. 28103 Avenue Stanford / Valencia, CA 91355

(661) 257-3022 / (800) 421-8910 / Fax (661) 257-3385