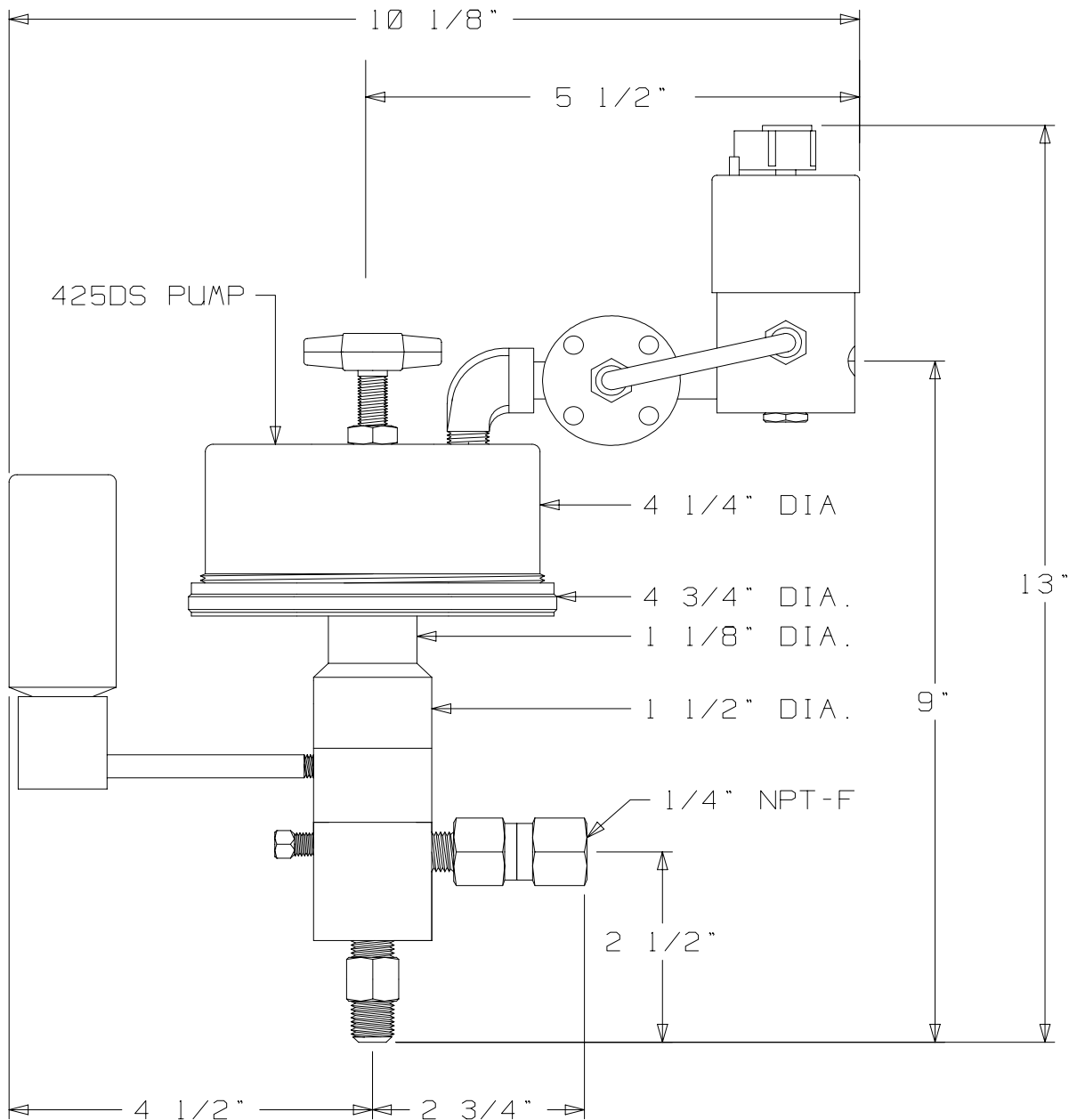


# MORGAN PRODUCTS

PNEUMATIC CHEMICAL PUMPS FOR THE GAS AND OIL INDUSTRIES

## MODEL 475DS-TR2-SR1S

AIR ACTUATED POSITIVE DISPLACEMENT PUMP



| MODEL<br>(WITH TIMER) | PUMP<br>DISPLACEMENT | PUMP<br>RATIO | STROKE<br>LENGTH<br>in. - cm. | CONNECTIONS<br>ALL NPT<br>INPUT / OUTPUT | MAXIMUM<br>DISCHARGE<br>PSI - BAR | OUTPUT<br>PER HOUR<br>GAL. / LTS. |
|-----------------------|----------------------|---------------|-------------------------------|--|-----------------------------------|-----------------------------------|
| 475DS-TR2-SR1S        | 3.2 cc               | 54:1          | 1 - 2.54                      | 1/2 - M / 1/4 - F                        | 8100 - 558                        | .25 - 2.5 / .95 - 9.5             |

**MORGAN PRODUCTS INC.** 28103 Ave. Stanford / Valencia, CA 91355

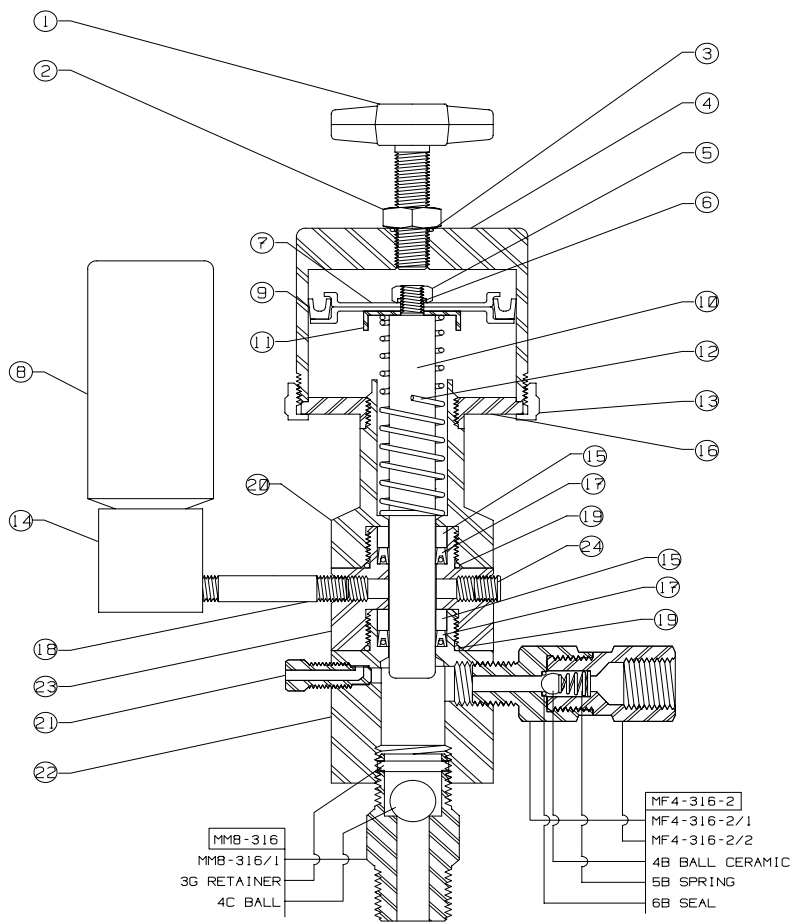
(805) 257-3022 - (800) 421-8910 - FAX (805) 257-3385

www.morganproducts.com - E-Mail info@morganproducts.com

# MORGAN PRODUCTS

PNEUMATIC CHEMICAL PUMPS FOR THE GAS AND OIL INDUSTRIES

## Parts List Model 275DS, 375DS, 475DS



| NO           | NAME              | PART NO.                       | PUMP MODEL                                |
|--------------|-------------------|--------------------------------|---|
| 1            | Stroke Adjuster   | 100-1                          | ALL                                       |
| 2            | Locknut           | 100-2                          | ALL                                       |
| 3            | O-Ring Seal       | 100-3 *                        | ALL                                       |
| 4            | Air Chambers      | 200-4<br>300-4<br>400-4        | 250DS/275DS<br>350DS/375DS<br>450DS/475DS |
| 5            | Piston Locknut    | 100-7                          | ALL                                       |
| 6            | O-Ring Seal       | 100-11 *                       | ALL                                       |
| 7            | Pistons           | 200-8<br>300-8<br>400-8        | 250DS/275DS<br>350DS/375DS<br>450DS/475DS |
| 8            | 2 oz. Oil         | 100-24                         | ALL                                       |
| 9            | Piston Seals      | 200-9 *<br>300-9 *<br>400-9 *  | 250DS/275DS<br>350DS/375DS<br>450DS/475DS |
| 10           | Plungers:         |                                |   |
|              | 17-4 TN           | 250-65 *                       | ALL                                       |
|              | 316 SS            | 275-67                         | Optional                                  |
|              | Carpenter 20      | 250-68                         | Optional                                  |
| 11           | Piston Stop       | 200-69                         | ALL                                       |
| 12           | Return Spring     | 250-13 *                       | ALL                                       |
| 13           | Air Chamber Rings | 200-5<br>300-5<br>400-5        | 250DS/275DS<br>350DS/375DS<br>450DS/475DS |
| 14           | Reservoir         | 3000-25                        | ALL                                       |
| 15           | Back Up Ring      | 250-19 *(2)                    | ALL                                       |
| 16           | Faceplates        | 200-6<br>300-6<br>400-6        | 250DS/275DS<br>350DS/375DS<br>450DS/475DS |
| 17           | Pressure Seals:   |                                |   |
|              | TG                | 250-20 *(2)                    | ALL                                       |
|              | Buna- N           | 250-20B                        | Optional                                  |
|              | Viton             | 250-20V                        | Optional                                  |
|              | Fluoraz           | 250-20F                        | Optional                                  |
| 18           | Nipples           | 100DS-32<br>3000-32<br>4000-32 | 250DS/275DS<br>350DS/375DS<br>450DS/475DS |
| 19           | O-Ring Seal       | 100-21 *(2)                    | ALL                                       |
| 20           | Oil Chamber       | 250-14                         | ALL                                       |
| 21           | Bleeder Plugs     | 125-22                         | ALL                                       |
| 22           | Fluid Chambers    | 275-23                         | ALL                                       |
| 23           | Double seal body  | 275-64                         | ALL                                       |
| 24           | 1/8 NPT Plug      | 5000-38                        | ALL                                       |
| N/S          | Elbow             | 4000-27                        | 450DS/475DS                               |
| N/S          | 1/4-20 Screw      | 4000-28 (2)                    | 450DS/475DS                               |
| N/S          | 1/4 Washer        | 4000-29 (2)                    | 450DS/475DS                               |
| N/S          | 1 oz. Grease      | *                              | ALL                                       |
| Repair Kits: |                   |                                |   |
|              | 17-4 TN Plunger   | 250-70<br>350-70<br>450-70     | 250DS/275DS<br>350DS/375DS<br>450DS/475DS |
|              | 316 SS Plunger    | 275-70<br>375-70<br>475-70     | 250DS/275DS<br>350DS/375DS<br>450DS/475DS |
|              | Seal Sets:        |                                |   |
|              | TG                | 250-48                         | ALL                                       |
|              | Buna- N           | 250-48B                        | ALL                                       |
|              | Viton             | 250-48V                        | ALL                                       |
|              | Fluoraz           | 250-48F                        | ALL                                       |

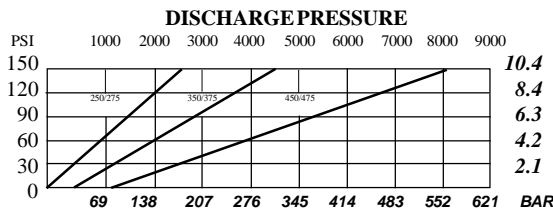
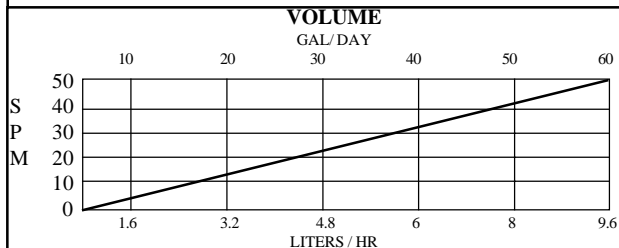
\* = Included in Repair Kit

### INSTALLATION INSTRUCTIONS

1. Discard all red plastic closures.
2. Connect suction check valve, to a gravity fed chemical source.
3. Connect discharge check valve, to process line.
4. Connect a regulated air or gas supply, to the timing relay.
5. Fill oil reservoir with oil provided.

\*\* This must be done BEFORE start up.\*\*

6. Open bleeder valve until chemical flows from bleeder.
7. Set regulator at 10 to 15 psi ABOVE the pressure required. (See discharge pressure graph).
8. Set cycle rate in strokes per minute. (See volume graph)



MORGAN PRODUCTS INC. 28103 Ave. Stanford / Valencia, CA 91355

(805) 257-3022 - (800) 421-8910 - FAX (805) 257-3385